














MONTAGEANLEITUNG

-  MONTAGEANLEITUNG
-  ASSEMBLY INSTRUCTION
-  DE INSTRUCTIE VAN DE ASSEMBLAGE
-  ISTRUZIONI DI MONTAGGIO
-  INSTRUCCIÓN DE ASAMBLEA
-  INSTRUCTION DE MONTAGE
-  NÁVOD K MONTÁŽI
-  MONTERINGSANVISNING

-  MONTAJ TALIMATI
-  ASENNUSOHJE
-  BRUGSANVISNING
-  BRUKSANVISNING
-  UPUTE ZA MONTAŽU
-  NAVODILA ZA MONTAŽO
-  SZERELÉSI ÚTMUTATÓ
-  INSTRUCTIUNI DE MONTAJ



Version 16.6



Modell-Nr.

12240

ART.-NR. FRONT KORPUS

12242  
Rot
(ähnl. RAL 3002) Silber

12247  
Ultramarinblau
(RAL 5002) Silber

12246  
Silber Schwarz
(RAL 9005)

Friedrich Küpper GmbH
Friedrich-Küpper-Weg
54570 Berlingen
Deutschland

Telefon +49 (0) 65 91 - 95 42 0
Telefax +49 (0) 65 91 - 95 42 17
E-Mail info@friedrich-kuepper.de
Internet www.friedrich-kuepper.de

EINZELTEILE / PIECES

1× **A**

772 mm × 475 mm

Art.-Nr. E0154 (Silber/silver)
Art.-Nr. E0155 (Schwarz/black)



1× **C**

1057 mm × 473 mm

Art.-Nr. E0189 (Silber/silver)
Art.-Nr. E0190 (Schwarz/black)



1× **B**

772 mm × 475 mm

Art.-Nr. E0165 (Silber/silver)
Art.-Nr. E0166 (Schwarz/black)



1× **D**

1057 mm × 473 mm

Art.-Nr. E0177 (Silber/silver)
Art.-Nr. E0178 (Schwarz/black)



1× **F**

645 mm × 450 mm

Art.-Nr. E0211 (Silber/silver)
Art.-Nr. E0212 (Schwarz/black)



1× **E**

985 mm × 480 mm

Art.-Nr. E0198 (Silber/silver)



1× **K**

403 mm × 468 mm

Art.-Nr. E0230 (Silber/silver)
Art.-Nr. E0227 (Rot/red)
Art.-Nr. E0229 (Blau/blue)



1× **Y**

1200 mm × 600 mm

Art.-Nr. E0255



1× **L**

400 mm × 25 mm

Art.-Nr. E0233 (Silber/silver)
Art.-Nr. E0234 (Schwarz/black)



4× **J**

450 mm × 120 mm

Art.-Nr. E0224 (Silber/silver)



4× **H**

450 mm × 445 mm

Art.-Nr. E0215 (Silber/silver)



4× **I**

470 mm × 130 mm

Art.-Nr. E0221 (Silber/silver)
Art.-Nr. E0218 (Rot/red)
Art.-Nr. E0220 (Blau/blue)



6× **X**

450 mm × 20 mm

Art.-Nr. E0252 (Schwarz/black)



2× **V**

450 mm × 440 mm

Art.-Nr. E0245 (Silber/silver)



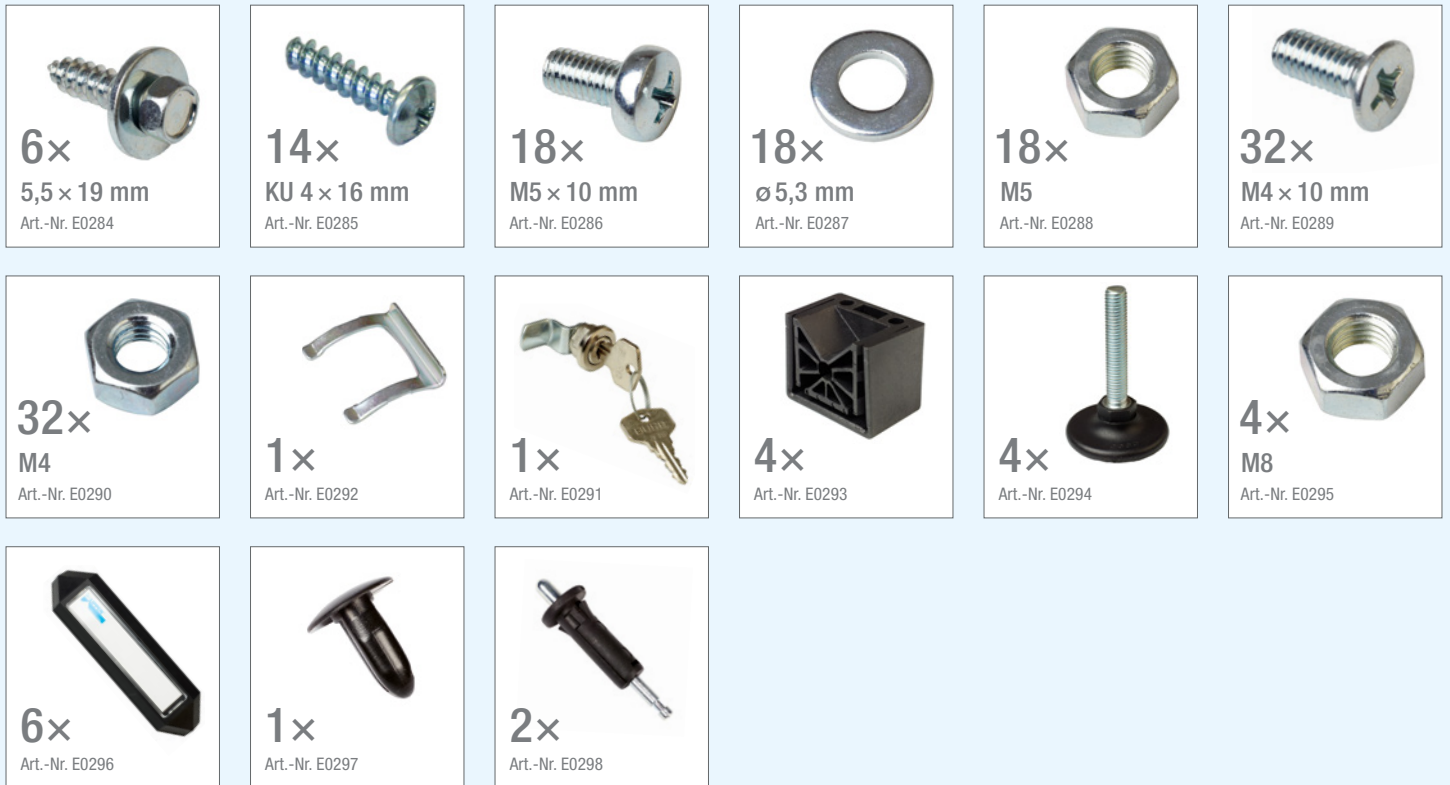
2× **W**

470 mm × 65 mm

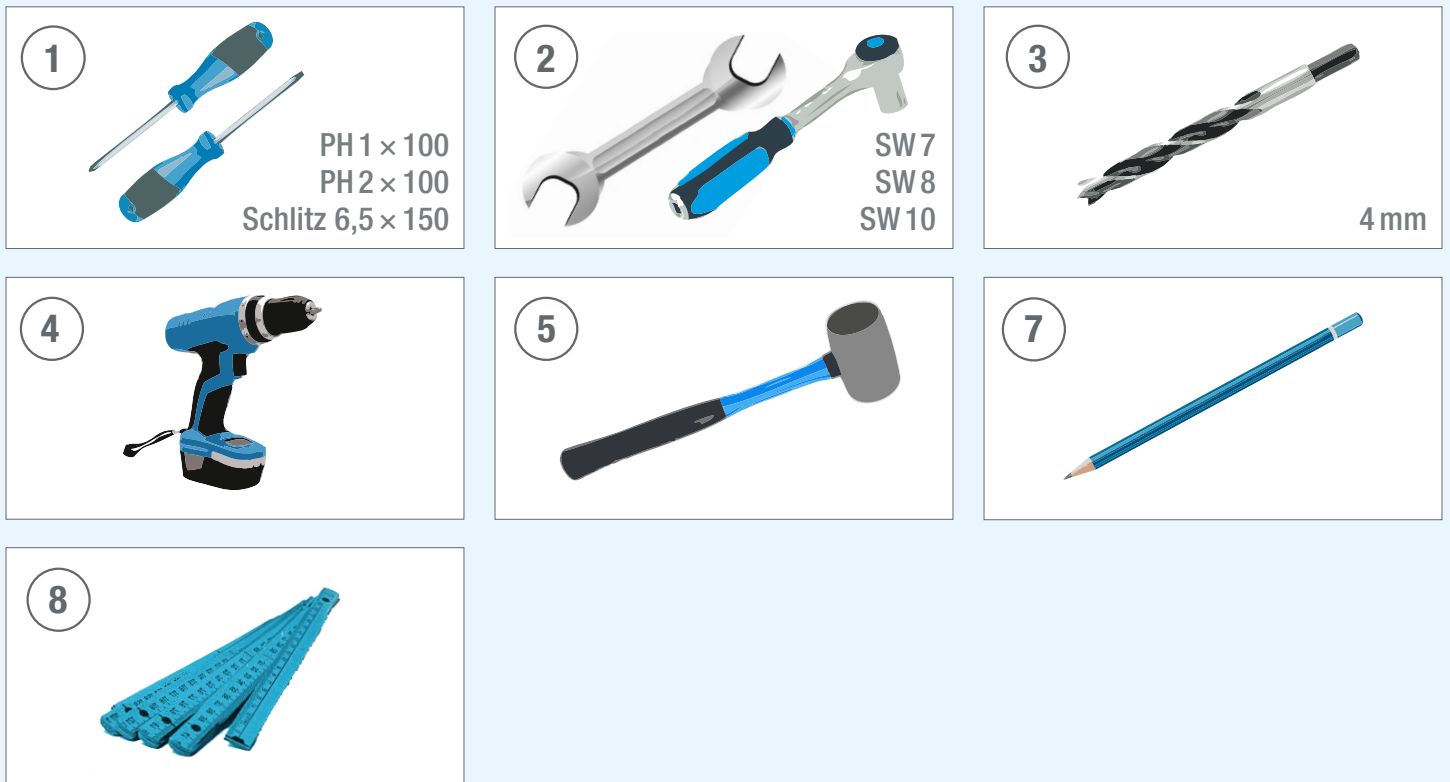
Art.-Nr. E0248 (Silber/silver)
Art.-Nr. E0250 (Rot/red)
Art.-Nr. E0251 (Blau/blue)



BEUTELINHALT / BAG CONTENT



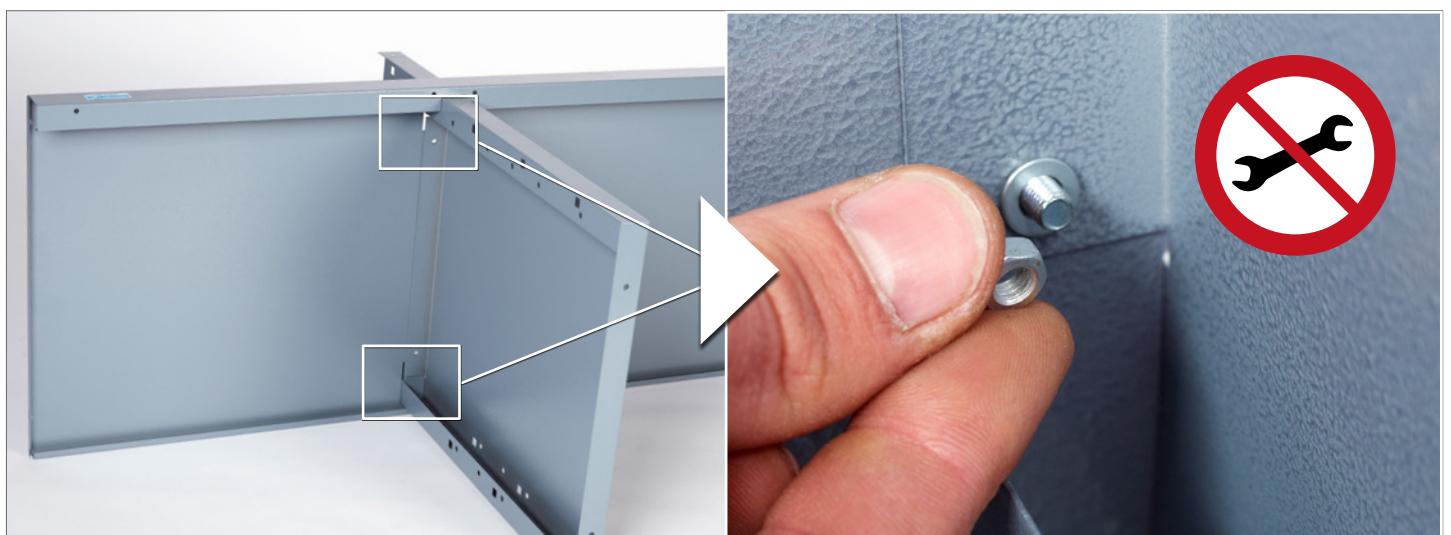
BENÖTIGTES WERKZEUG / NEEDED TOOLS



1. WICHTIG / IMPORTANT



2.  2 x M5  2 x M5 x 10  2 x 5,3 MM



3.



4.

2 × M5 2 × M5 × 10 2 × 5,3 MM

② SW 8 ① PH 2 × 100



ZU SCHRITT 2. / IN ADDITION TO STEP 2.

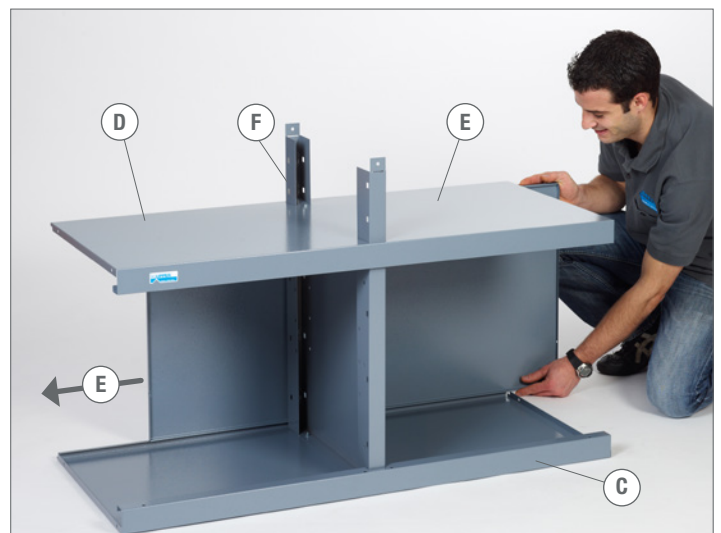
② SW 8 ① PH 2 × 100



5.



6.



7. WICHTIG / IMPORTANT



8. WICHTIG / IMPORTANT



9. 6x M5 6x M5 x 10 6x 5,3MM 2 SW 8 1 PH2 x 100



10. 6x M5 6x M5 x 10 6x 5,3MM 2 SW 8 1 PH2 x 100



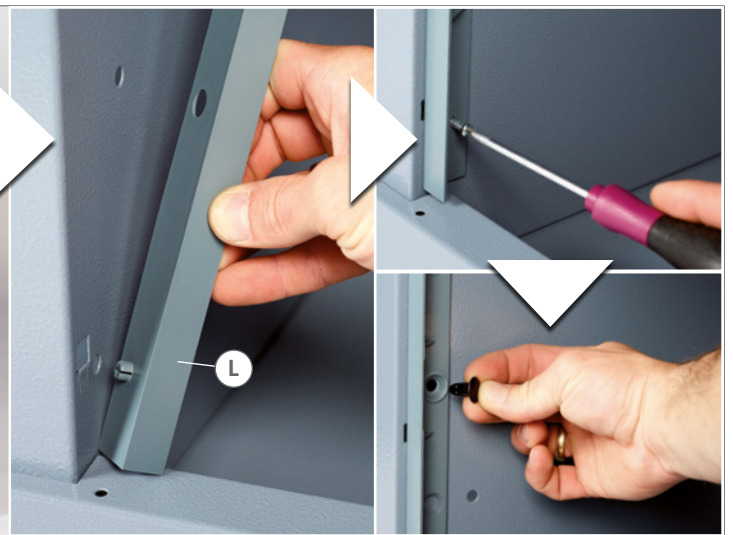
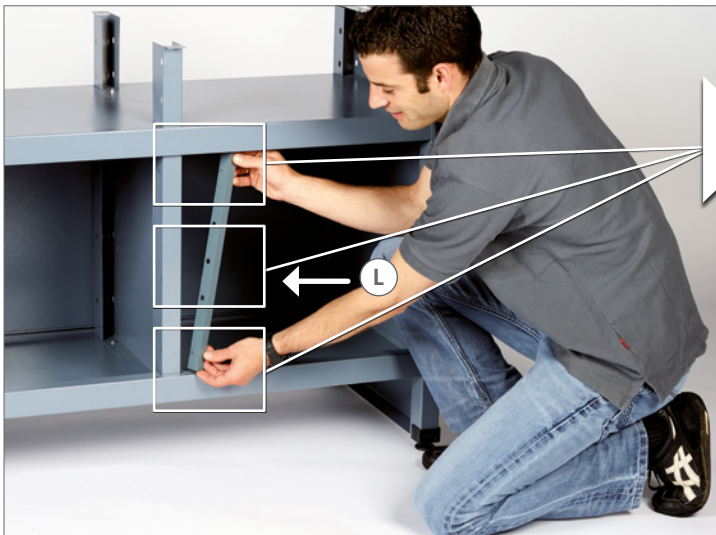
11. 4x M8 4x 4x 4x

5 



12. 2x KU 4 x 16 1x

1  PH 2 x 100



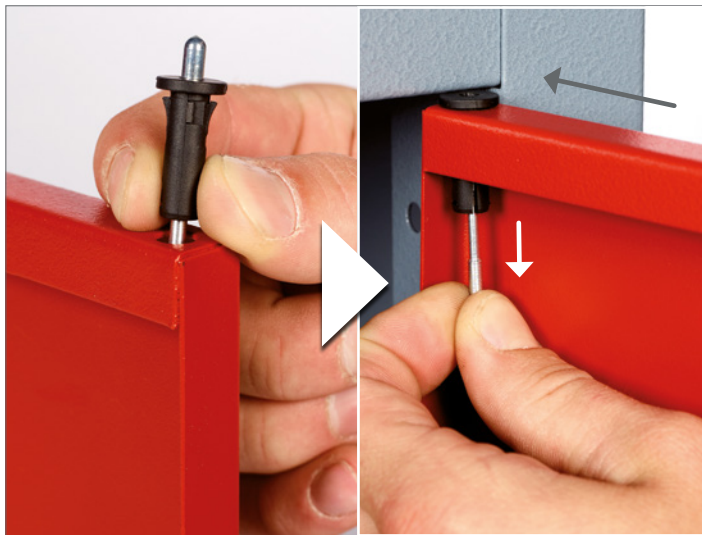
13.



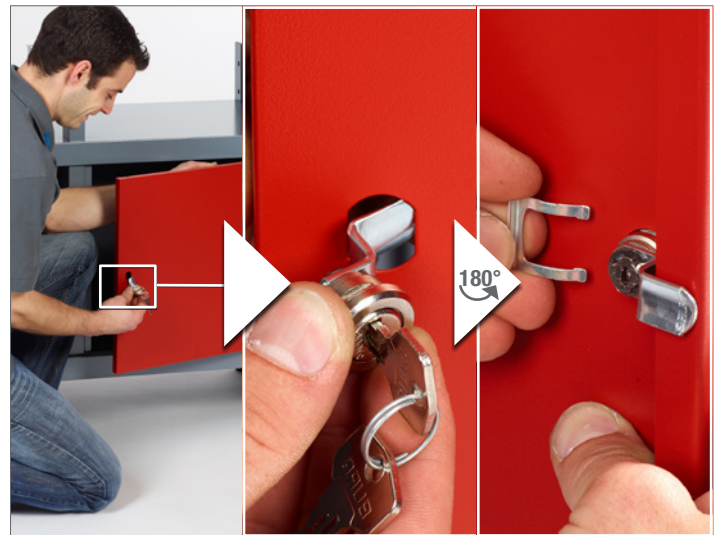
14.  2x



15.

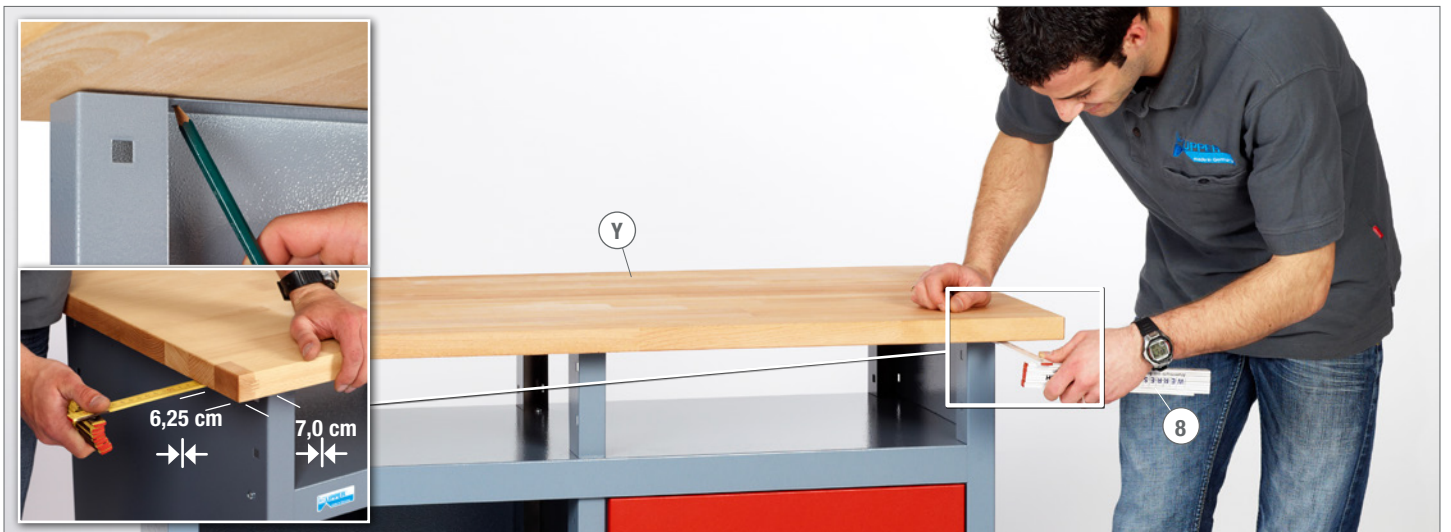


16.  1x  1x



17.

 8   7



18.



19.

6x 5,5x19



20.

6x CR



21.

6x CL

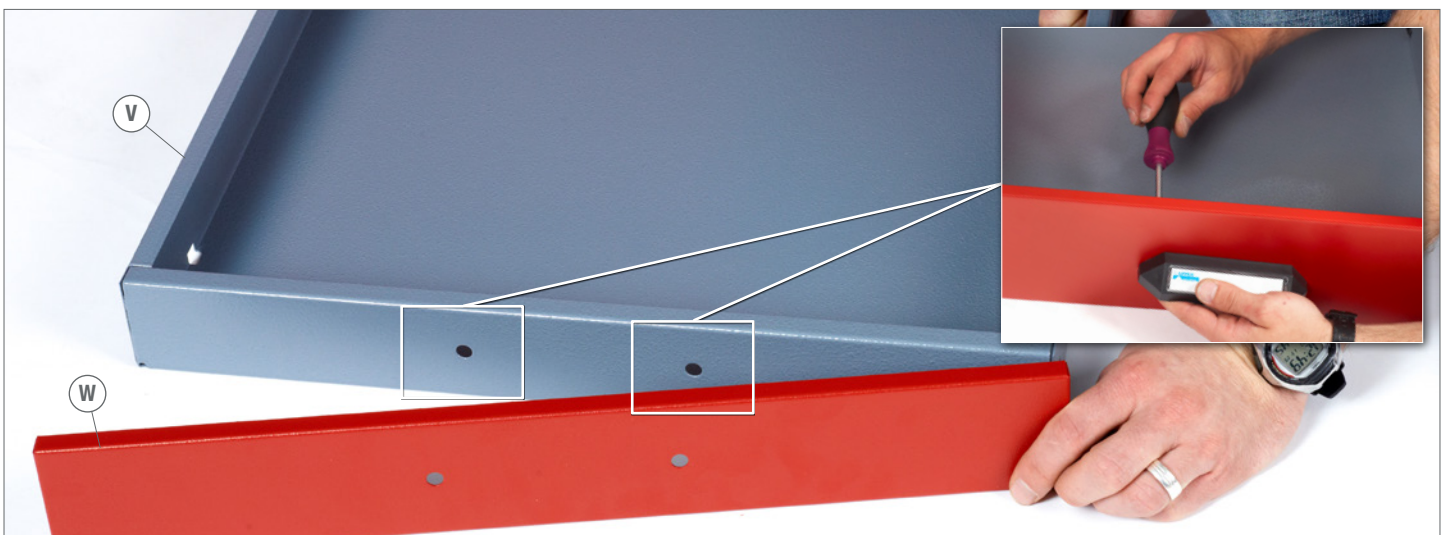


22.

4x KU 4x16



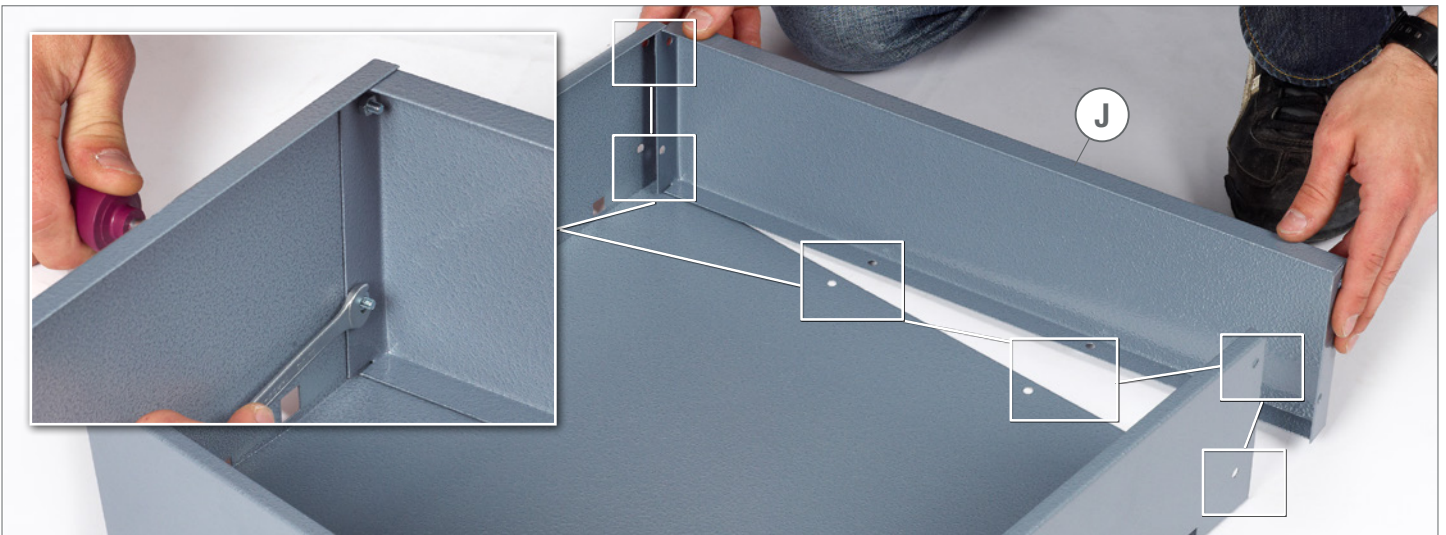
1 PH1x100



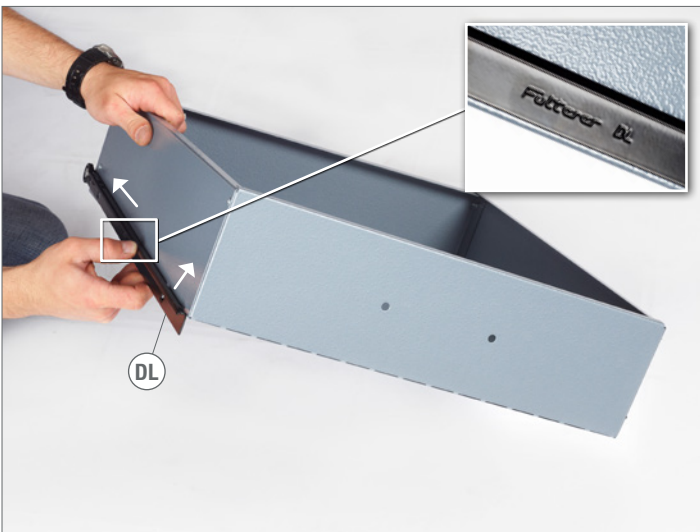
23. 8x M4 8x M4x10 ② SW7 ① PH1x100



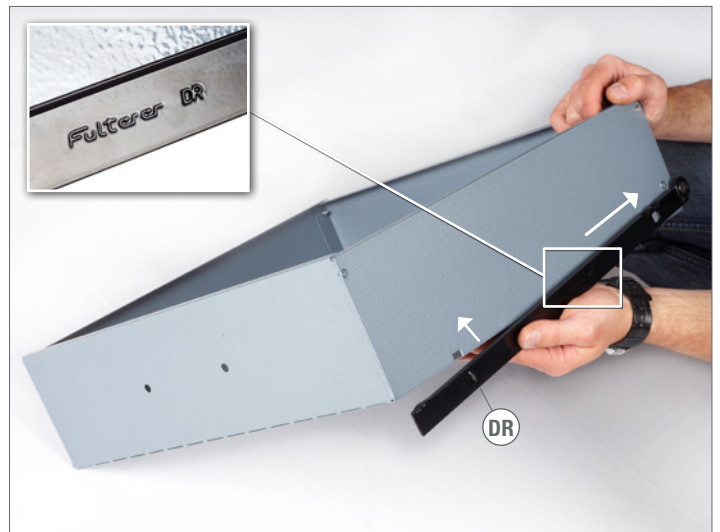
24. 24x M4 24x M4x10 ② SW7 ① PH1x100



25.



26.



27.



28.

8x KU4 x 16

4x



① PH2 x 100



29.





Modell-Nr.

12240